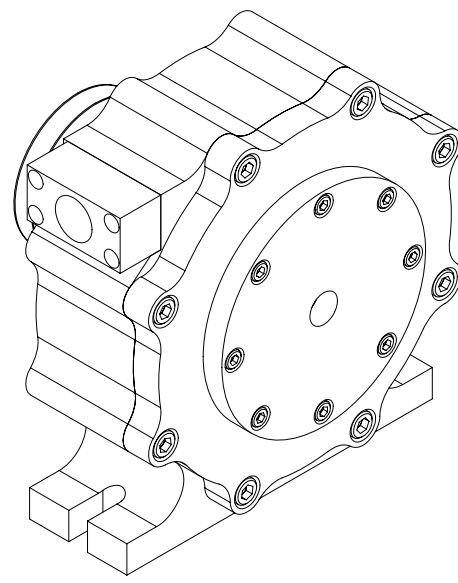
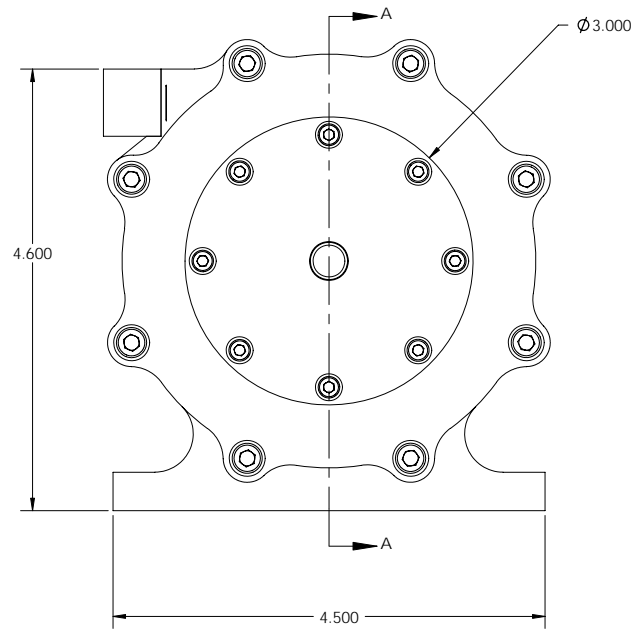
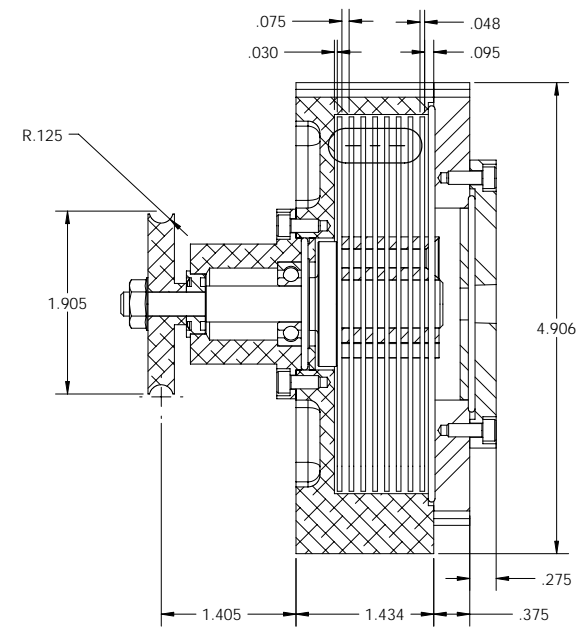
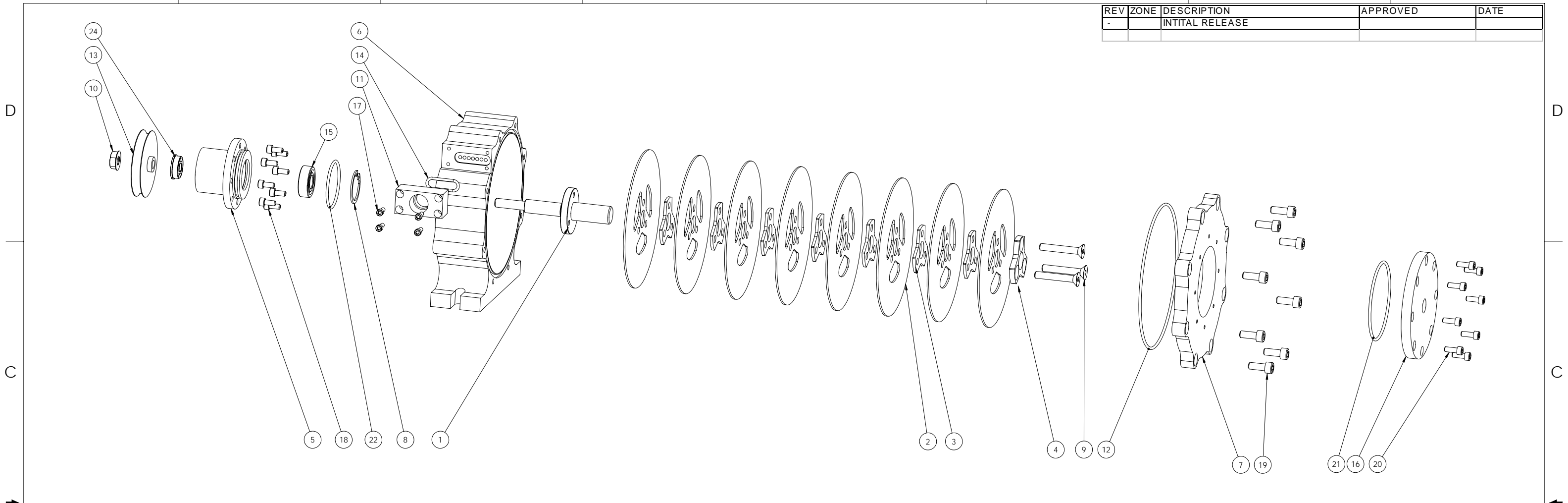


| REV | ZONE | DESCRIPTION     | APPROVED | DATE |
|-----|------|-----------------|----------|------|
| -   |      | INITIAL RELEASE |          |      |



| ITEM NO. | QTY | DESCRIPTION                                    |
|----------|-----|------------------------------------------------|
| 1        | 1   | SHAFT, ROTOR                                   |
| 2        | 8   | DISC, TURBINE                                  |
| 3        | 7   | SPACER, TURBINE DISC                           |
| 4        | 1   | CLAMP PLATE, ROTOR                             |
| 5        | 1   | HOUSING, BEARING                               |
| 6        | 1   | HOUSING, TURBINE                               |
| 7        | 1   | COVER, HOUSING                                 |
| 8        | 1   | RETAINING RING, BEARING                        |
| 9        | 3   | SHCS 10-24 X 1.25                              |
| 10       | 1   | LOCKNUT .250-20                                |
| 11       | 1   | BLOCK, INLET                                   |
| 12       | 1   | ORING, COVER AS568A-045                        |
| 13       | 1   | PULLEY, OUTPUT SHAFT                           |
| 14       | 1   | ORING, INLET AS568A-016                        |
| 15       | 1   | BALL BEARING .8750 OD X .3750 ID X .281 ABEC 7 |
| 16       | 1   | INLET PLATE, PUMP                              |
| 17       | 4   | SHCS .112-40 X .31                             |
| 18       | 8   | SHCS .138 X .31                                |
| 19       | 8   | SHCS 10-24 X .50                               |
| 20       | 8   | SHCS .138 X .38                                |
| 21       | 1   | ORING, COVER AS568A-045                        |
| 22       | 1   | ORING, BEARING HSG AS568A-026                  |
| 23       | 1   | SPACER, BEARING                                |
| 24       | 1   | .6250 X 2500 BEARING, FLANGED ABEC7            |

ALL DIMENSIONS ARE IN INCHES - INTERPRET DRAWING PER ASME Y14.5 -1994

TOLERANCES UNLESS OTHERWISE SPECIFIED:  
 X.X ± .03 ∠ ± .5°  
 X.XX ± .01  
 X.XXX ± .005 125/

REMOVE ALL BURRS AND SHARP EDGES .005 R OR CHAMFER MAX

|                        |          |                               |          |              |
|------------------------|----------|-------------------------------|----------|--------------|
| APPROVED               | DATE     | <br><b>TESLA TURBINE ASSY</b> |          |              |
| PREP BY<br>D. ANDERSON | 2-20-08  |                               |          |              |
| CHECKED                |          |                               |          |              |
| RESP ENG               |          |                               |          |              |
| MFG ENG                |          |                               |          |              |
| QUAL ENG               |          |                               |          |              |
| SIZE                   | FSCM NO. | PART NO.                      | PART REV | DOC REV      |
| D                      |          |                               |          | 01           |
| SCALE                  | 1:1      | WT                            | 3.0509   | SHEET 1 OF 1 |